 REMO-HSE	ES-120k-Series	Datasheet
	High Voltage Earth Switch	

Description:

- Earth switch in a sealed brass case filled with insulation oil for DC-voltages up to 120kV
- 24 VDC or 230VAC control voltage
- High voltage will be disconnected from ground as soon as the control voltage is connected. After switching off the control voltage the high voltage is connected to ground via a lead resistor first and then shorted with delay.
- Available with different leak resistance values (depending on the capacitance of the installation)
- Optional: feedback contact (max. 250 V/100mA)



Typical Applications:

E.g. Electrostatic filters; oiling installations; spraying installations with powder, wet paint and flocking

Technical Data

High Voltage Connection:	max. 120kV DC
Control Voltage:	230 V AC ($\pm 10\%$, 50/60 Hz), max. 20VA or 24VDC ($\pm 10\%$), max. 12W
Leak Resistance:	depending on the capacitance of the installation
High Voltage Connectors:	4mm brass bushing, insertion depth ca. 300mm; dry plug-in connection with PG-gland
Earth Connector:	M5 threaded bolt
Control Connector:	7-pin connector
Mode of Operation:	vertical operation only; switch closes under gravity
Dimensions:	ca. \varnothing 120mm; L 382mm incl. PG-gland
Weight:	ca. 5,1kg

es-120k-series_ds_en_02

Date: 2012-01	REMO-HSE Hochspannungselektronik GmbH, Straubinger Str. 28, D - 94372 Rattiszell Tel.: +49 (0) 9964 / 6406 - 0 * Fax: +49 (0) 9964 / 6406 - 20 * Email: info@remo-hse.de	Seite 1 / 4
------------------	---	----------------



REMO-HSE

ES-120k-Series

High Voltage Earth Switch

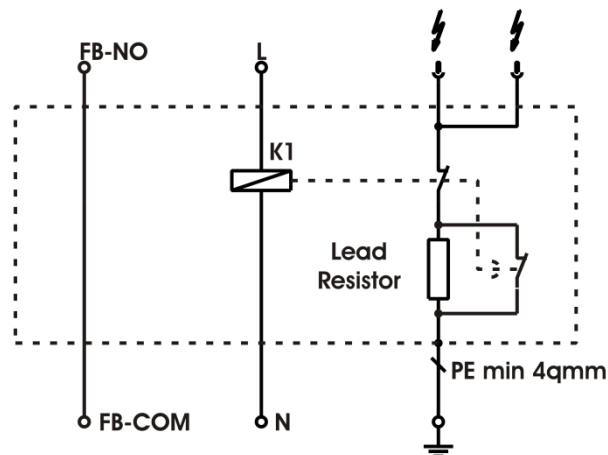
Datasheet

Environmental Data

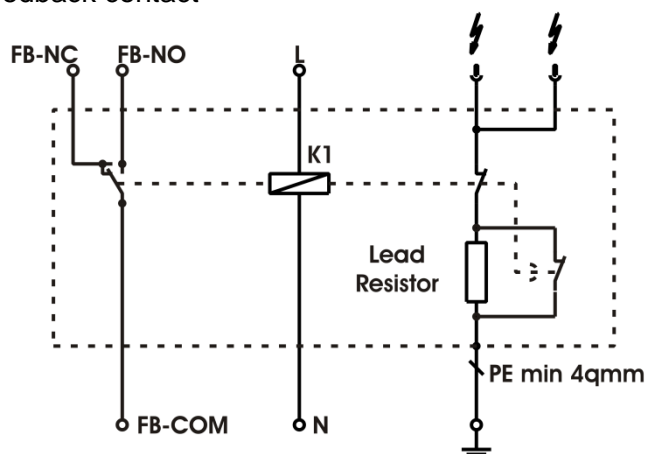
Operating Temperature Range:	0 to +45°C
Storage Temperature Range:	-25 to +70°C
Humidity:	80% maximum relative humidity up to +31°C, reducing linearly to 50% at +45°C. non condensing (ref. EN61010-1).
Altitude:	0 to 2000m

Schematic Circuit Diagram

❖ Earth switch without feedback contact



❖ Earth switch with feedback contact




es-120k-series_ds_en_02

Date:
2012-01

REMO-HSE Hochspannungselektronik GmbH, Straubinger Str. 28, D - 94372 Rattiszell
Tel.: +49 (0) 9964 / 6406 - 0 * Fax: +49 (0) 9964 / 6406 - 20 * Email: info@remo-hse.de

Page
2 / 4

 REMO-HSE	ES-120k-Series	Datasheet
	High Voltage Earth Switch	

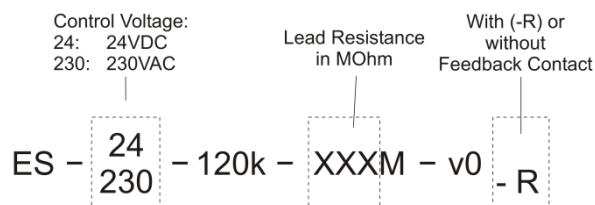
Control Terminal Assignment

Pin	Name	Without Feedback		With Feedback	
		1	L	phase	24VDC
2	N	neutral	GND	neutral	GND
3	NC	not connected			
4	FB-NC	not connected		potential-free break contact	
5	FB-COM	jumpered with FB-NO		common contact	
6	FB-NO	J jumpered with FB-COM		Potential-free close contact	
PE	PE	protective earth conductor			

Model Selection Table^{*)}:


Control Voltage 230VAC	Control Voltage 24VDC	Lead Resistance (Ohm)	Feedback Contact (R)
ES-230-120k-50M-v0	ES-24-120k-50M-v0	50M	-
ES-230-120k-50M-v0-R	ES-24-120k-50M-v0-R	50M	R
ES-230-120k-165M-v0	ES-24-120k-165M-v0	165M	-
ES-230-120k-165M-v0-R	ES-24-120k-165M-v0-R	165M	R
ES-230-120k-430M-v0	ES-24-120k-430M-v0	430M	-
ES-230-120k-430M-v0-R	ES-24-120k-430M-v0-R	430M	R

^{*)} Further models are available on request

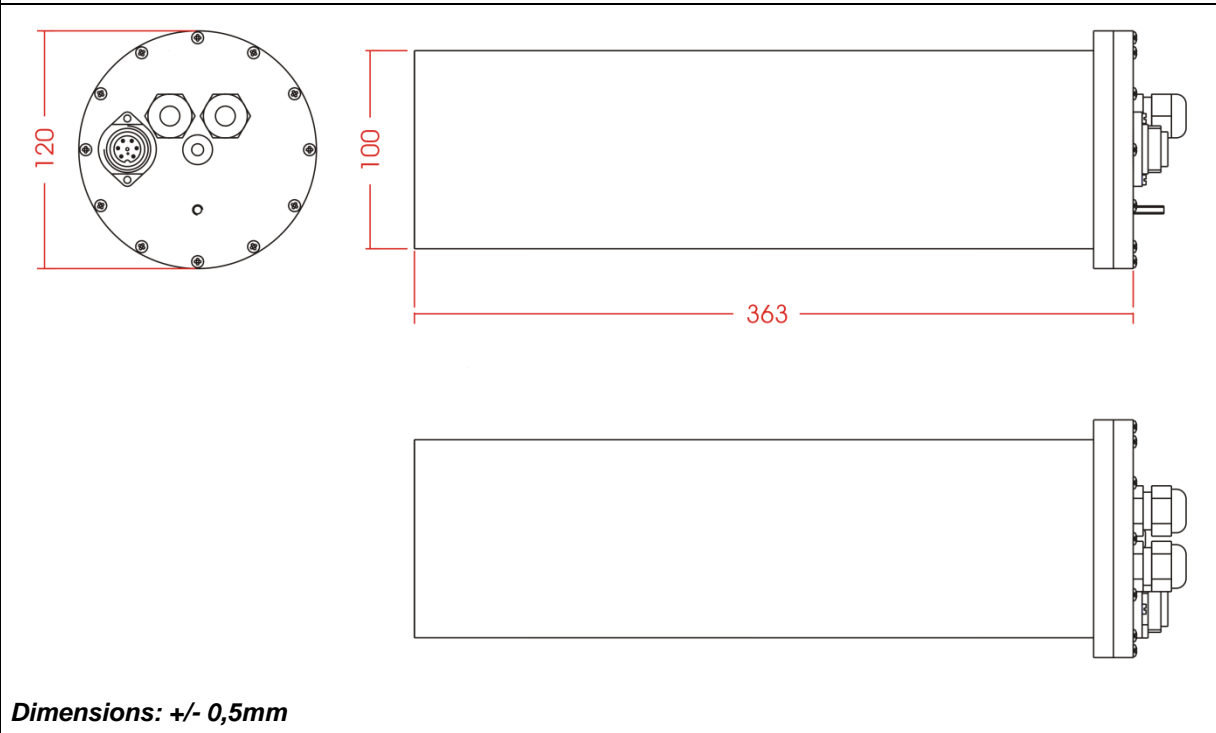


es-120k-series_ds_en_02

Date: 2012-01	REMO-HSE Hochspannungselektronik GmbH, Straubinger Str. 28, D - 94372 Rattiszell Tel.: +49 (0) 9964 / 6406 - 0 * Fax: +49 (0) 9964 / 6406 - 20 * Email: info@remo-hse.de	Page 3 / 4
------------------	---	---------------

 REMO-HSE	ES-120k-Series	Datasheet
	High Voltage Earth Switch	

Mechanical Drawings:



Date: 2012-01	REMO-HSE Hochspannungselektronik GmbH, Straubinger Str. 28, D - 94372 Rattiszell Tel.: +49 (0) 9964 / 6406 - 0 * Fax: +49 (0) 9964 / 6406 - 20 * Email: info@remo-hse.de	Page 4 / 4
------------------	---	---------------